

Hannah Wilke

Early Drawings

September 11 – October 30, 2010

South Gallery

Stanley Landsman, 1966
pastel, graphite, and photographs on paper
18 x 24 inches
signed
WILSTANLEY692



Untitled, 1967
pastel, charcoal, and graphite on paper
17 3/8 x 24 inches
signed
WILUNTITLED674



Puppy, late 1960s
graphite and collage on paper
18 x 24 inches
WILDOG706



Untitled, ca. 1966
pastel and pencil on paper
22 1/2 x 28 1/2 inches
signed
WILUNTITLED670



Untitled, early 1960s
black wash and white paint on paper
19 x 25 inches
WILUNTITLED609



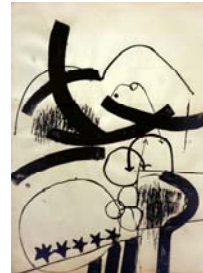
Untitled, ca. 1960
oil on rice paper
21 x 29 inches
WILUNTITLED857



Untitled, 1965
charcoal and ink on paper
20 3/8 x 15 1/2 inches
signed
WILUNTITLED597



Untitled, early 1960s
charcoal and ink on paper
31 1/4 x 23 inches
signed
WILUNTITLED593



Untitled, early 1960s
charcoal and ink on paper
23 x 35 inches
WILUNTITLED610



Untitled, early 1960s
charcoal and ink on paper
24 x 18 inches
signed
WILUNTITLED588



Untitled, early 1960s
charcoal and ink on paper
31 x 23 1/8 inches
signed
WILUNTITLED595



Untitled, early 1960s
graphite on paper
8 7/16 x 9 3/16 inches
WILUNTITLED613



Untitled, 1964
graphite on paper
11 x 8 1/2 inches
signed
WILUNTITLED599



Equinox, ca. 1965
graphite and colored pencil on paper
18 x 24 inches
signed
WILEQUINOX639



In the Dog House, 1973
pastel, graphite, and collage on paper
18 x 24 inches
signed
WILDOG701



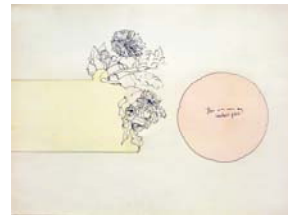
Pax, ca. 1972
pastel, graphite, and collage on paper
18 x 24 inches
WILPAX705



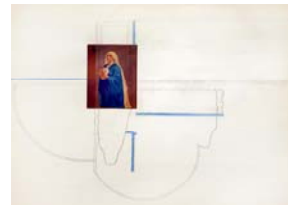
Three Boys at Tea, 1975
pastel, graphite, and collage on paper
18 x 24 inches
signed
WILTHREEBOYS700



This Was Once My Mother's Plate, mid 1960s
pastel and graphite on paper
18 x 24 inches
signed
WILMOTHERSPLATE675



Madonna with Doves, ca. 1970
pastel, graphite, and collage on paper
22 3/4 x 28 3/4 inches
WILMADONNA695



The Forgotten Man, ca. 1970
pastel, pencil, and collage on paper
23 x 29 1/4 inches
WILFORGOTTEN704



Rose in Water, ca. 1970
pastel, graphite, and collage on paper
17 1/2 x 23 inches
signed
WILROSE702



Untitled, early 1960s
fiberglass and plaster
29 x 40 x 10 inches
WILUNTITLED8



North Gallery

Left-wing Angel, November 1, 1976
blue, black and brown ink on Arches paper
22 1/8 x 30 inches
signed
WILLEFTWING(MOMA)



Crucifixion Complex, 1978
magic marker on paper
11 x 14 inches
signed
WILCRUCIFIXION723



Left-wing Angel, November 2, 1976
sepia ink on paper
20 x 14 1/8 inches
WILLEFTWING714



Untitled, 1960s
graphite on gray card
7 5/16 x 4 13/16 inches
WILUNTITLED617



Untitled, 1960s
graphite on gray card
4 13/16 x 7 5/16 inches
WILUNTITLED620



Untitled, 1960s
graphite on gray card
7 5/16 x 4 13/16 inches
WILUNTITLED619



Untitled, 1960s
graphite on gray card
4 13/16 x 7 5/16 inches
WILUNTITLED616



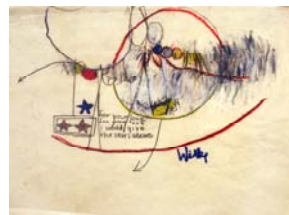
Untitled, 1960s
pastel and graphite on paper
12 1/2 x 9 1/4 inches
signed
WILUNTITLED653



Untitled, 1960s
pastel and graphite on paper
9 x 12 inches
signed
WILUNTITLED654



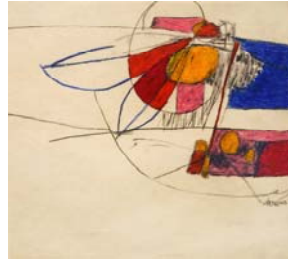
For your love I would give the stars above, 1960s
pastel and graphite on paper
9 5/8 x 12 inches
signed
WILUNTITLED652



Untitled, 1960s
pastel and graphite on paper
8 3/4 x 11 inches
WILUNTITLED661



Untitled, 1965
pastel and charcoal on paper
9 3/4 x 12 inches
signed
UNTITLED649



Untitled, 1960s
pastel and graphite on gray card
6 3/16 x 7 1/4 inches
WILUNTITLED664



Untitled, 1960s
pastel and graphite on gray card
4 1/2 x 6 5/8 inches
WILUNTITLED665



Untitled, mid 1960s
pastel and graphite on paper
12 x 9 5/8 inches
signed
WILUNTITLED650



Untitled, 1965
pastel and graphite on paper
12 3/8 x 14 3/8 inches
signed
WILUNTITLED641



Untitled, 1965
pastel and graphite on paper
12 3/8 x 17 7/8 inches
signed
WILUNTITLED640



Untitled, July 1965
pastel and graphite on Sparklepaque
17 x 11 inches
signed
WILUNTITLED642



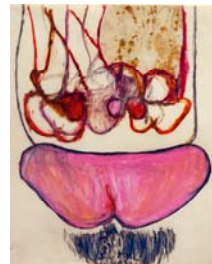
Untitled, mid 1960s
pastel on paper
12 x 12 inches
signed
WILUNTITLED647



Untitled, 1964
pastel on paper
13 7/8 x 10 7/8 inches
signed
WILUNTITLED646



One Car Just Ain't Enough These Days, 1964
pastel and charcoal on paper
14 x 11 inches
WILONECAR637



Untitled, 1964
pastel and graphite on paper
13 7/8 x 10 7/8 inches
WILUNTITLED645



How Big Should Your Harem Be: 1, 1960s
pastel and graphite on gray card
5 x 7 inches
WILHAREM668



Untitled, early 1960s
pastel and charcoal on paper
13 x 14 1/4 inches
WILUNTITLED635



Untitled, 1960s
pastel and graphite on gray card
6 5/8 x 4 1/2 inches
WILUNTITLED666



Untitled, 1960s
pastel and graphite on gray card
7 1/4 x 6 3/16 inches
WILUNTITLED663



Untitled, 1960s
pastel and graphite on gray card
7 1/4 x 4 3/4 inches
WILUNTITLED667



Criminal Fingerprint Record, 1977
photographs and police fingerprint record on paper
29 x 23 inches
WILCRIMINAL1237

